

DIY 48V 16S BATTERY BOX

280Ah 300Ah 302Ah 304Ah 310Ah



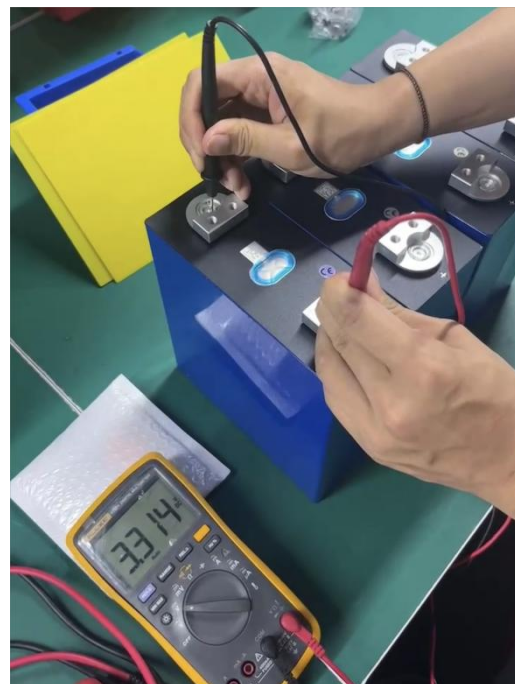
Step 1. EVA Tape A/B/C Installation

Material: epoxy insulation board A/B/C

Rip open the epoxy insulation board A/B/C and stick them to the inner sides of the box



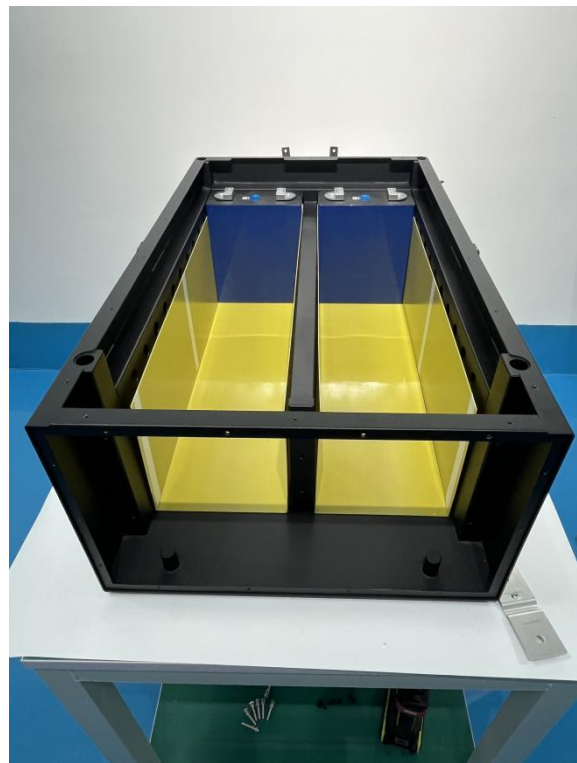
Step 2. Test the cells
Make sure the voltage is consistent



Step 3. Stick on the EVA tapes, Please notice if your cells are swollen, we don't recommend sticking the EVA tapes on.



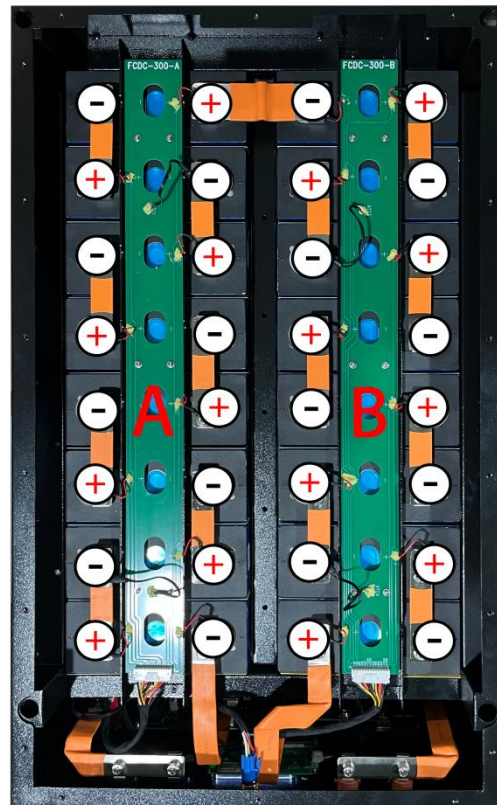
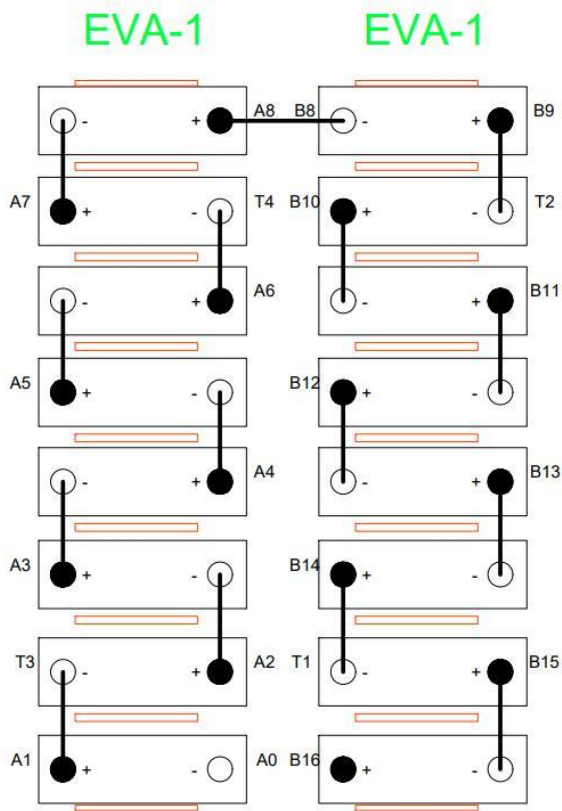
Step 4. Put on the epoxy boards, and put the cells one by one, each cell has one epoxy board between



Attention1:

1, Make sure the cells are in the right place

2, Put the A-board on the left, B-board on the right side



Step 5. Front plate kits assembling

Material:

2*battery terminals (yellow)

2*battery terminals (black)

1*front plate

1*BMS

1*display screen



Step 6. BMS Wiring

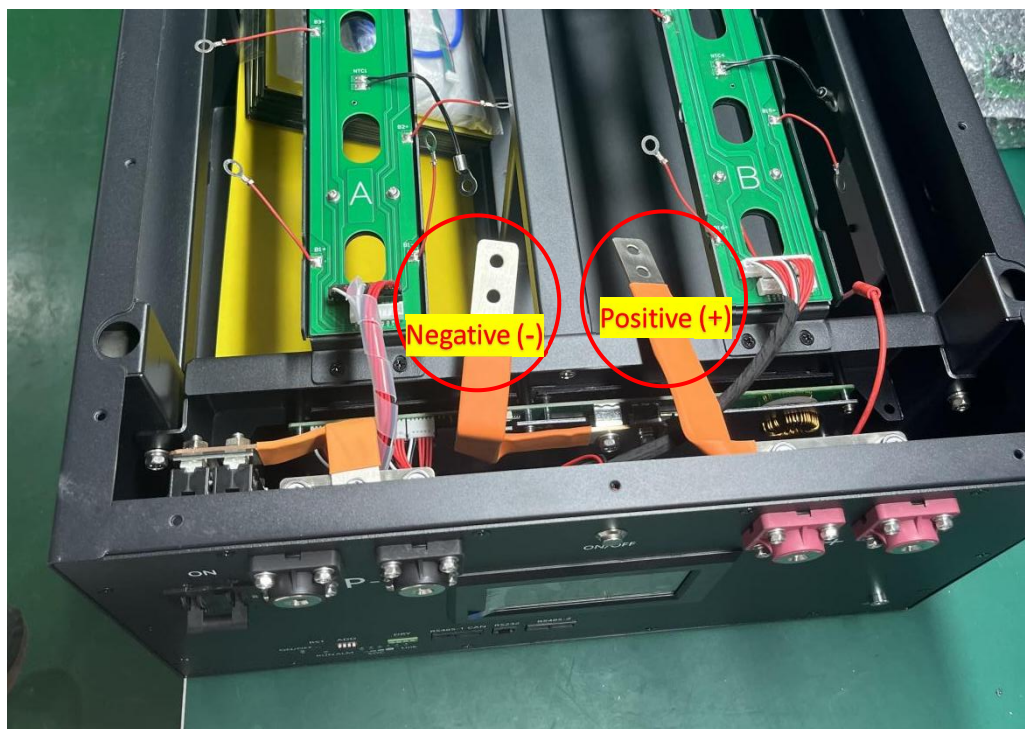
As shown in the picture

The black terminal harness plugs into the PCB strip at A

The white terminal harness plugs into the PCB strip at B

Black cable connects to the negative terminal of the battery

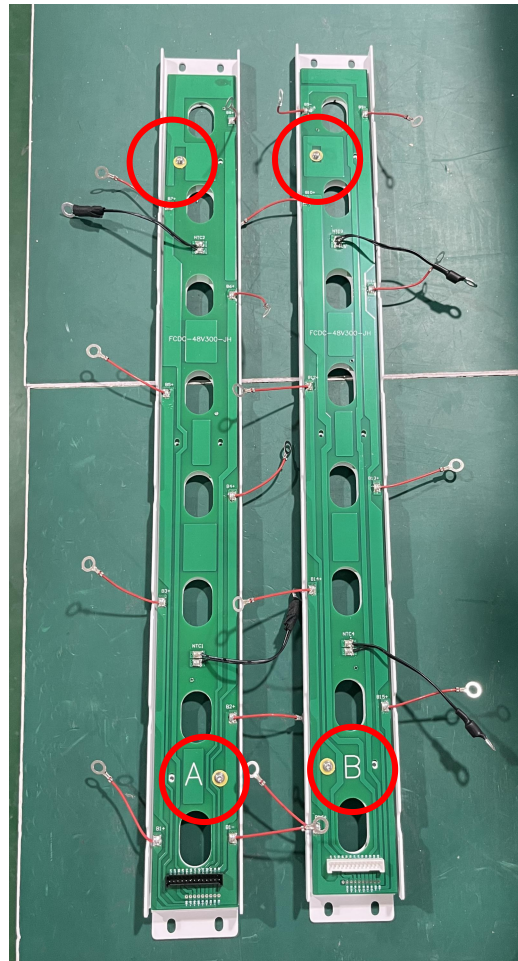
Red cable wire connects to the positive terminal of the battery

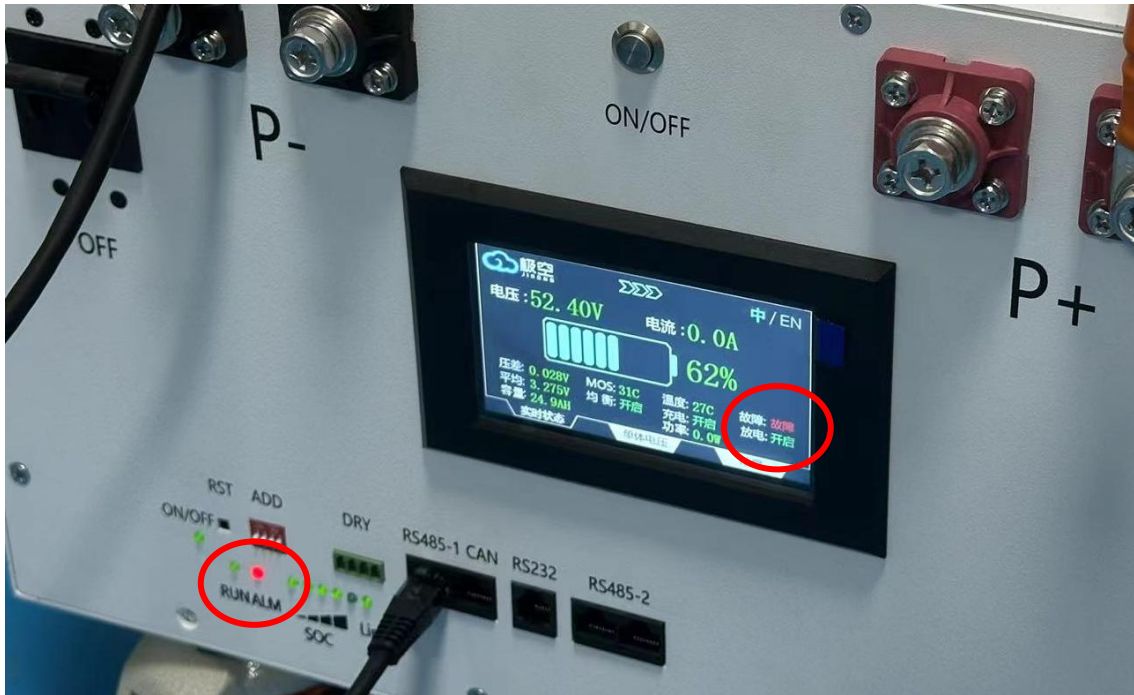


Attention2:

1. We need to remove all the M3 screws, prepare 4 insulating washers, and 4 M3 screws.

2. Only two M3 screws need to be placed on the A and B boards of the PCB (as shown in the figure below), and the insulating washers should be placed under the M3 screws to prevent short circuits.





Attention3:

After putting the cell into the box and installing it, start the battery. We will see two red warnings. Please don't worry, it's just that you haven't changed the initial password. You can click to change the password and the two red alarms will disappear.

Step 7. Battery Pack Fix

Lock the box, box cover and front plate with torque index of 4 Nm. And we finish assembling the 51.2V 280Ah battery pack.

